



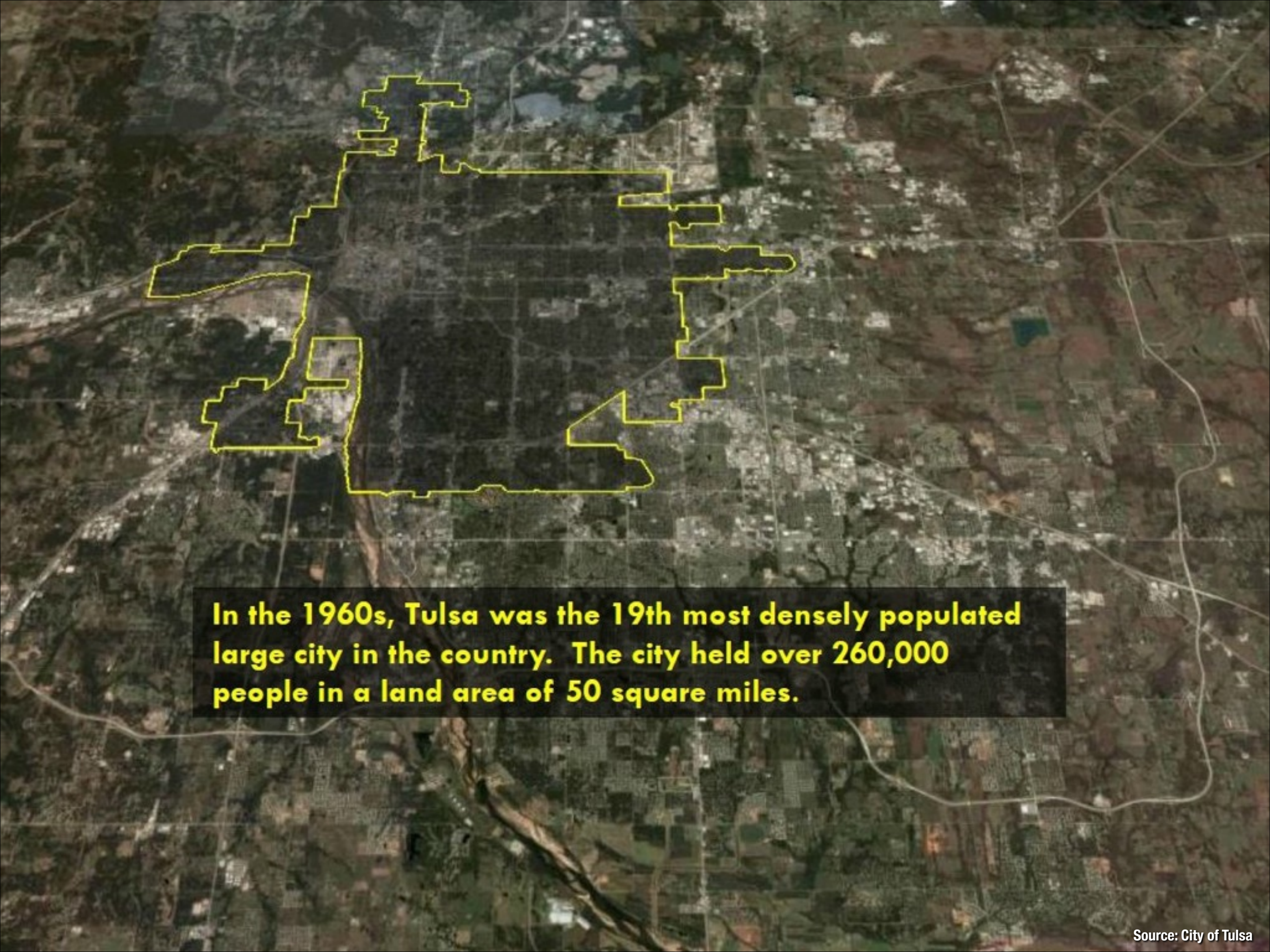
How Tulsa Helped Itself to Bike/Pedestrian Infrastructure & Bus Rapid Transit

Stephen Lassiter
Bicycle & Pedestrian Advisory Committee
Tulsa, OK

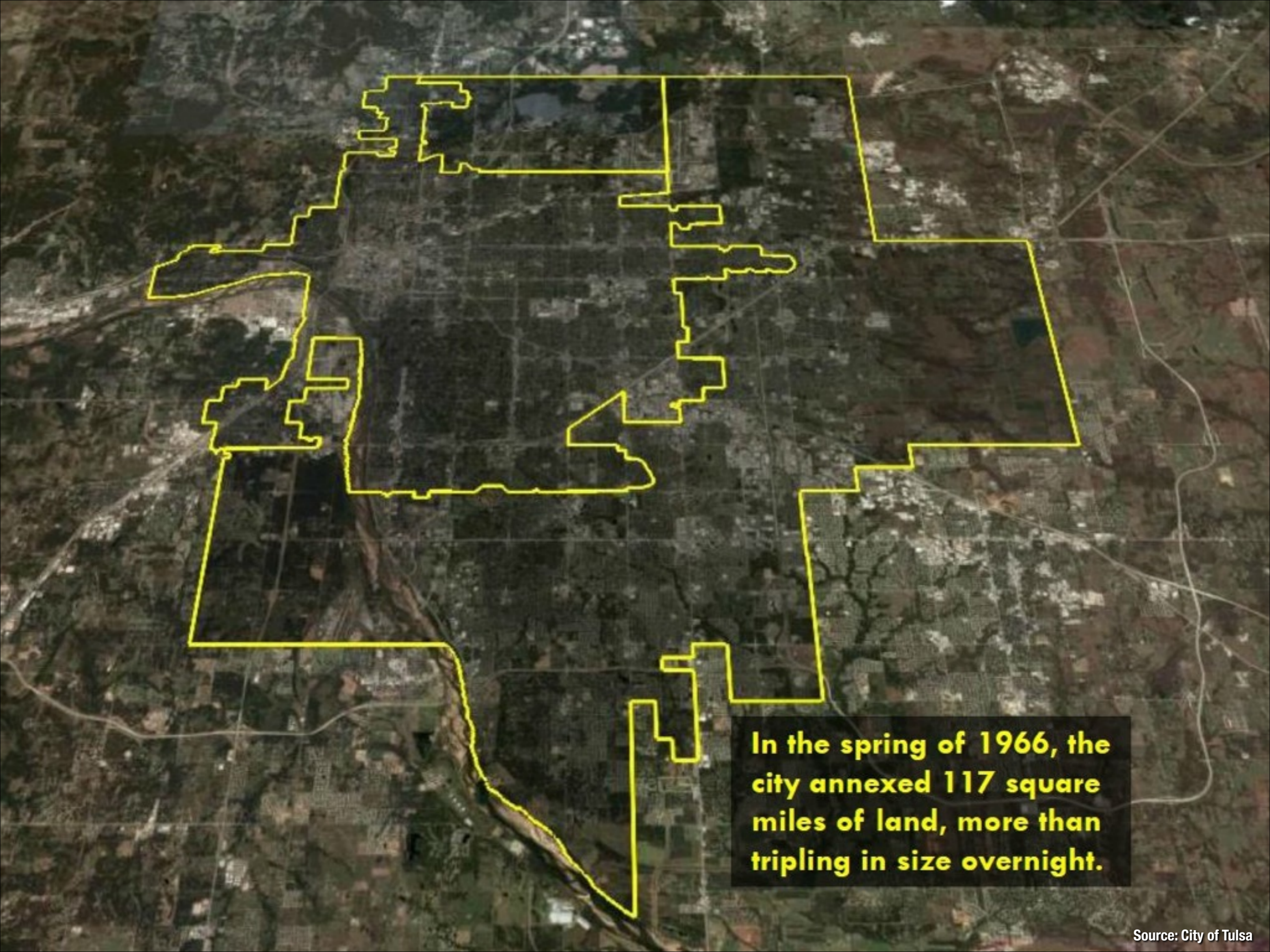
New Partners for Smart Growth Conference
Denver, CO
February 15, 2014

TULSA, OK





In the 1960s, Tulsa was the 19th most densely populated large city in the country. The city held over 260,000 people in a land area of 50 square miles.



In the spring of 1966, the city annexed 117 square miles of land, more than tripling in size overnight.

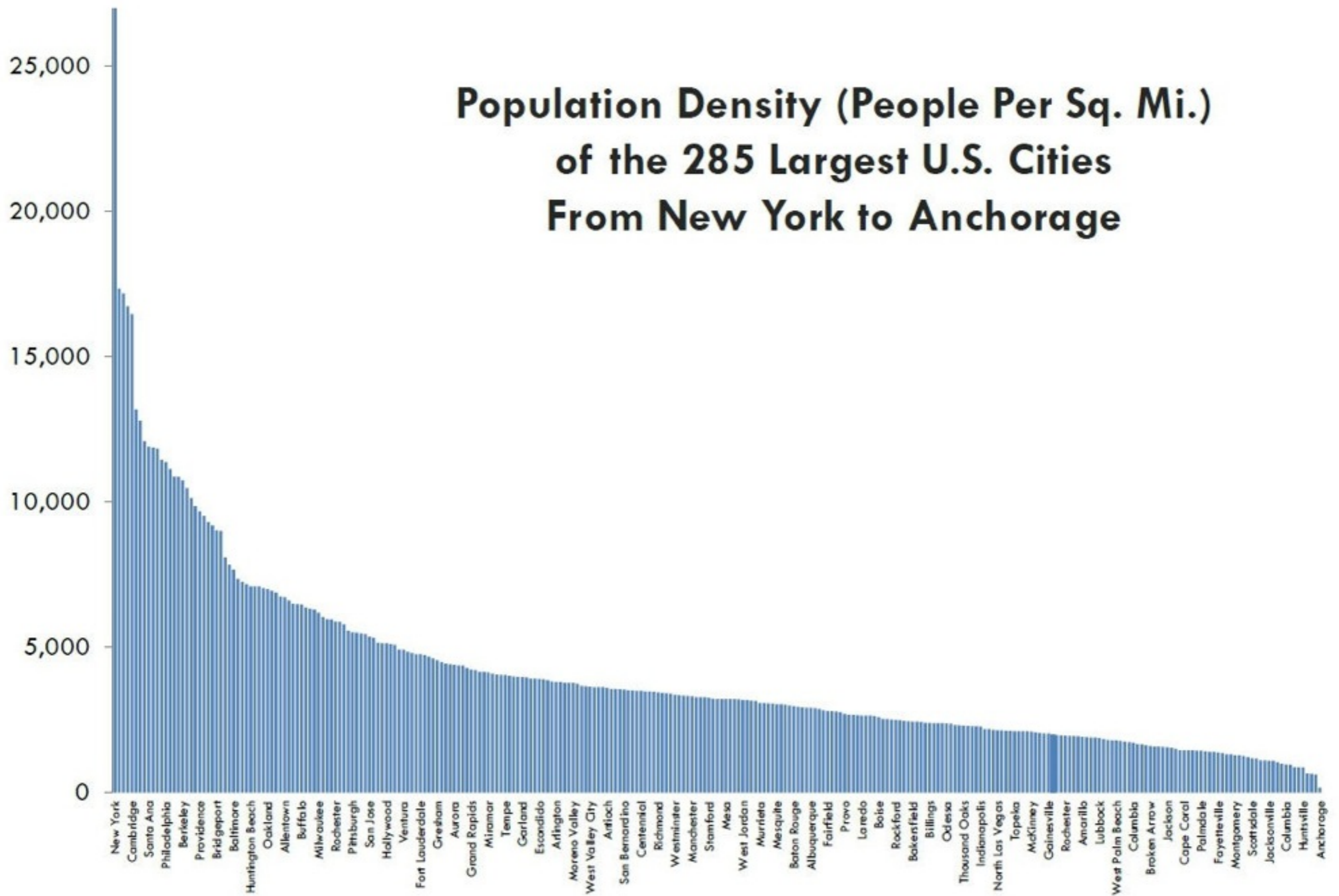
At 197 square miles, the City of Tulsa is larger than San Francisco, Boston, Washington D.C., and Miami . . .



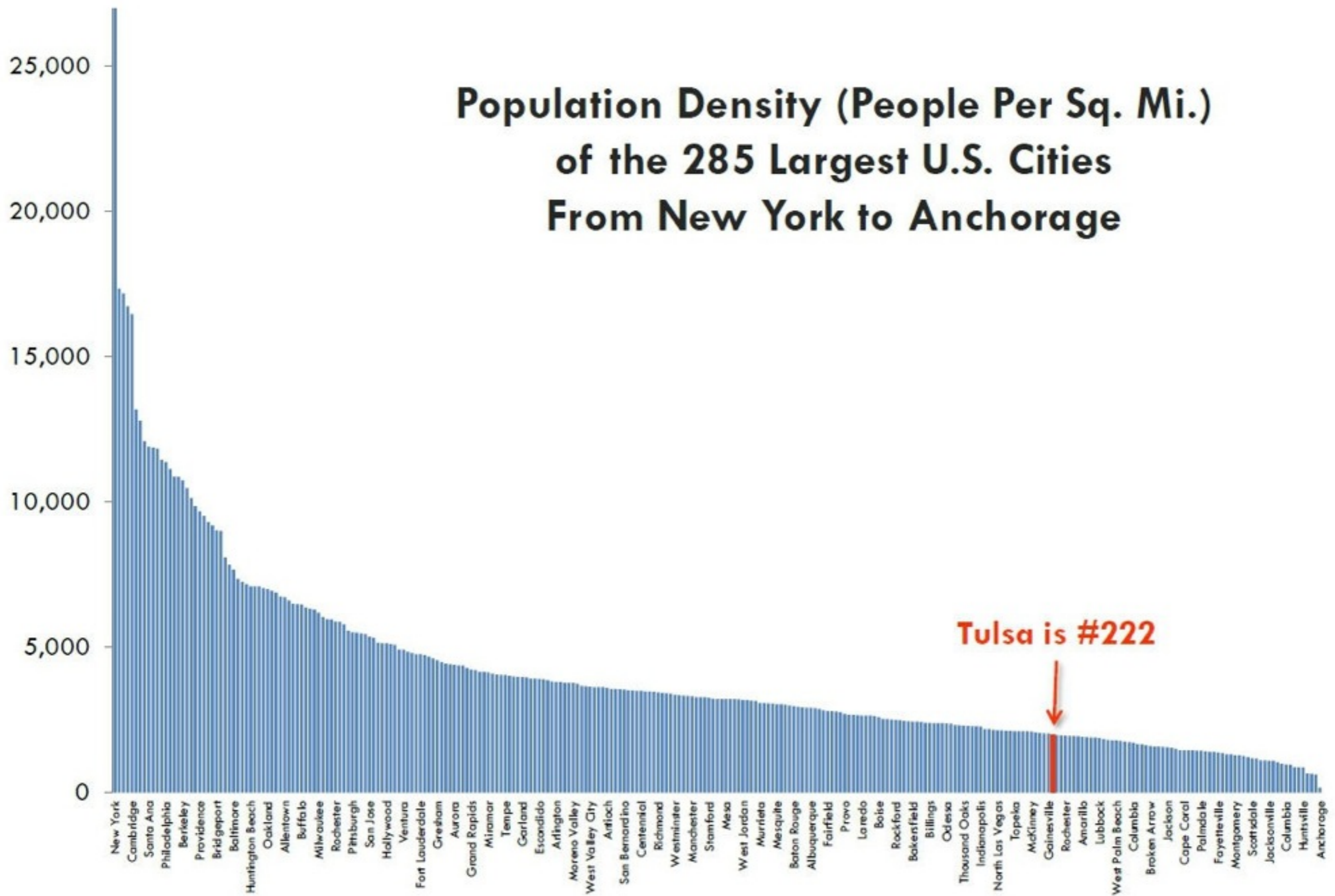
**At 197 square miles, the City of Tulsa is larger than San Francisco, Boston, Washington D.C., and Miami . . .
. . . combined.**



Population Density (People Per Sq. Mi.) of the 285 Largest U.S. Cities From New York to Anchorage



Population Density (People Per Sq. Mi.) of the 285 Largest U.S. Cities From New York to Anchorage



There are enough lane miles of streets in the City of Tulsa to stretch from New York to Los Angeles, and back to Tulsa – with 500 miles to spare . . .



. . . with a signalized intersection every ten miles along the way.

FIX OUR STREETS

\$451.6 Million

November 2008





VOTE YES! NOV. 12

\$918.7 MILLION

NOVEMBER 2013

\$23.4 MILLION FOR BIKE/PEDESTRIAN

\$15 MILLION FOR BUS RAPID TRANSIT

**Establish
relationships
long before
you need them**

**Establish
relationships
long before
you need them**

Babysitter



**Establish
relationships
long before
you need them**



**City Council
Biking & Walking Tour**

Show Up



Show Up Speak Up



Photo courtesy Tulsa World

**Stay On Top,
Things Can
Change
Quickly**





VOTE YES! NOV. 12

YES: 70%

NO: 30%

Stephen Lassiter

Bicycle & Pedestrian Advisory Committee

Tulsa, OK

stephen.lassiter@bikewalktulsa.org



[@bikewalktulsa](https://twitter.com/bikewalktulsa)

